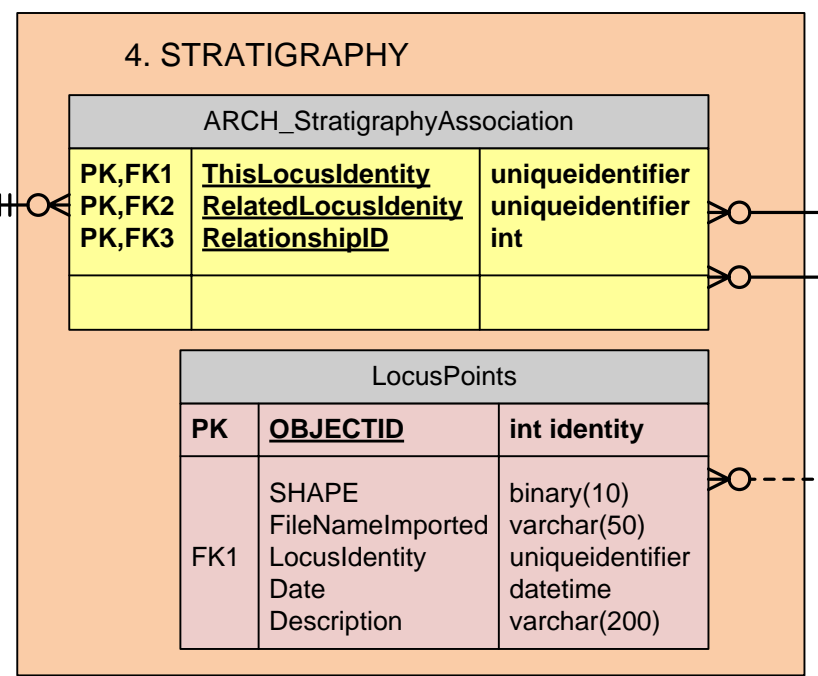
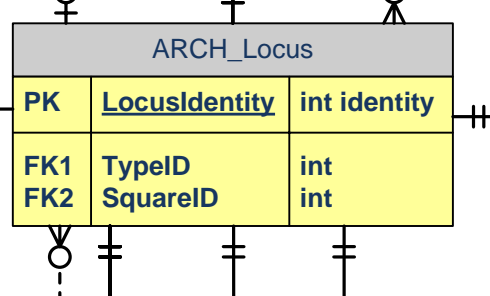
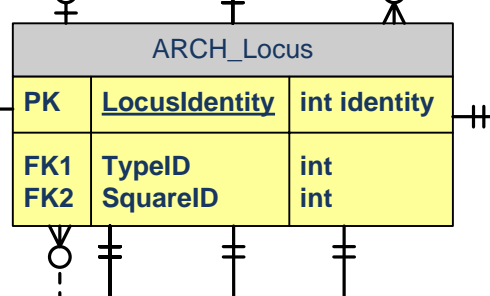
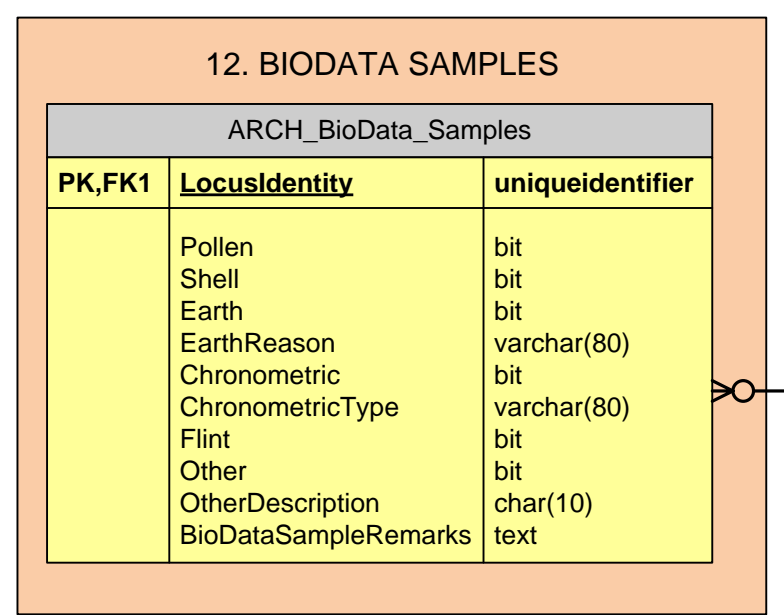
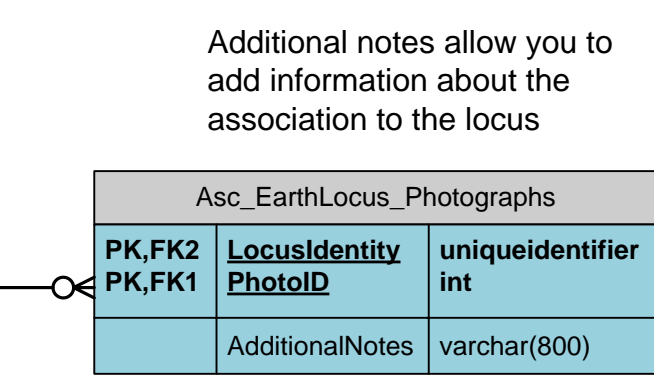
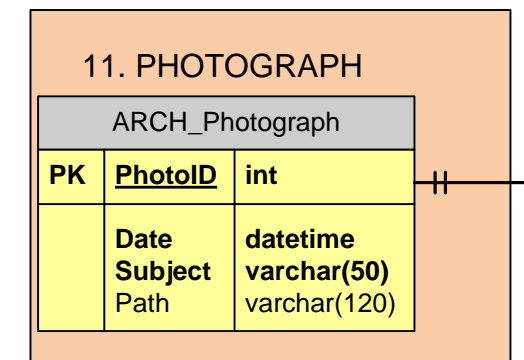
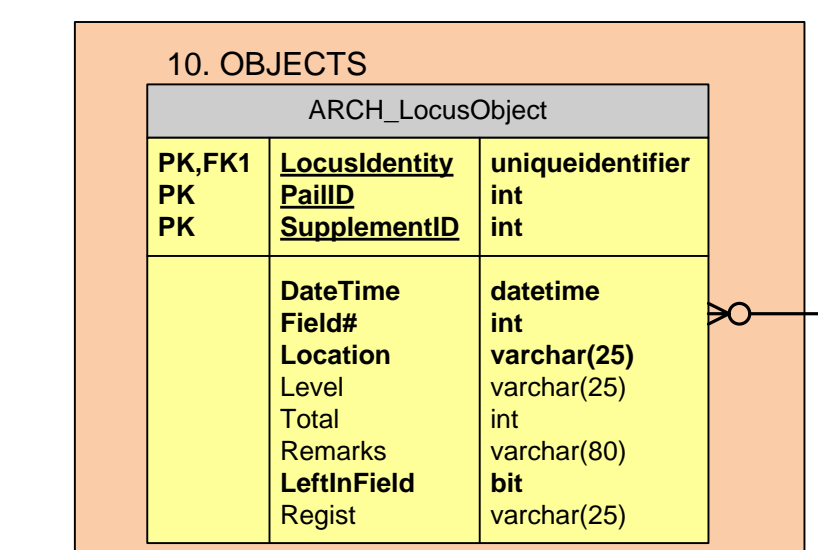
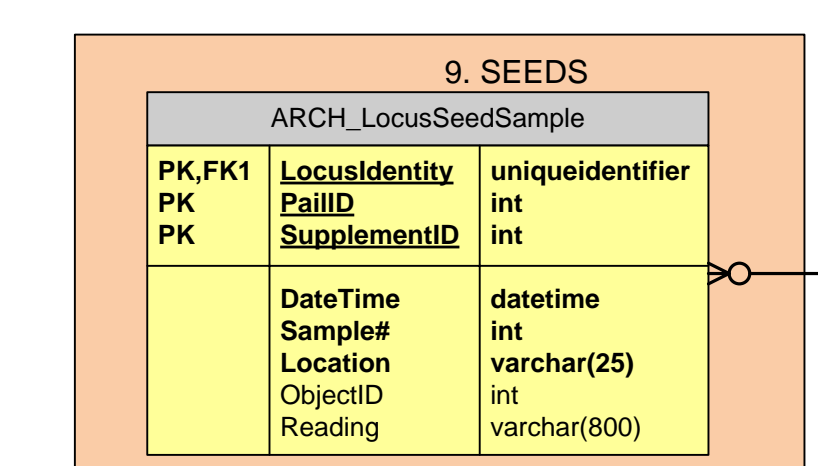
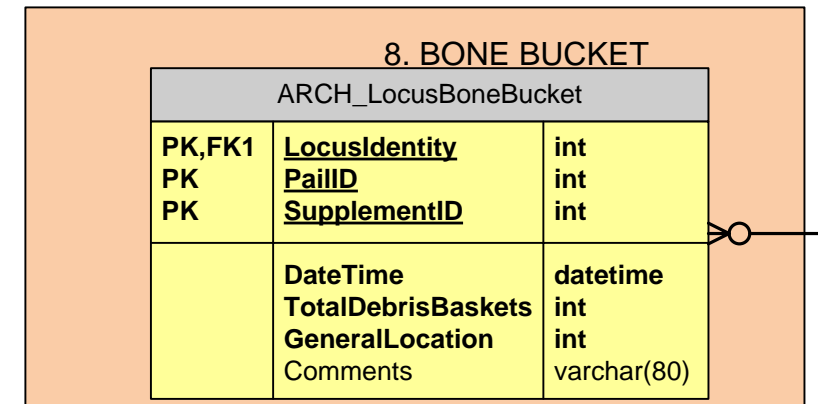
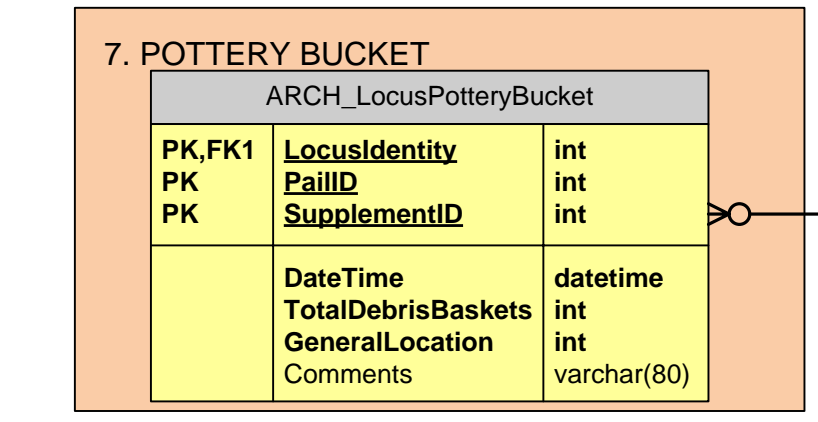


PK	RelationshipID	int identity
	RelationshipDescription	varchar(25)

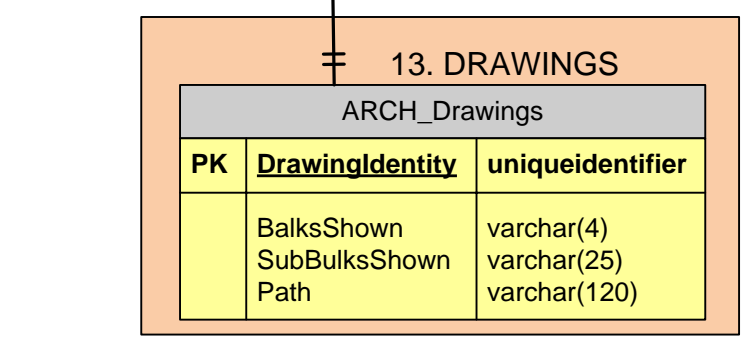
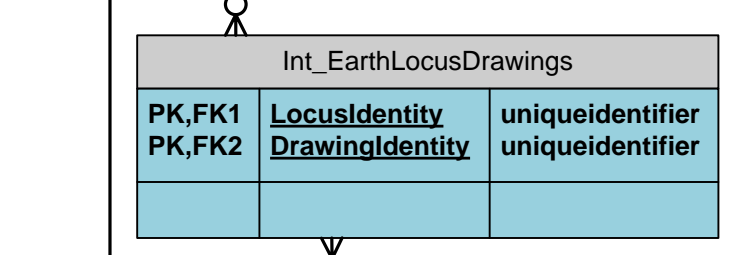
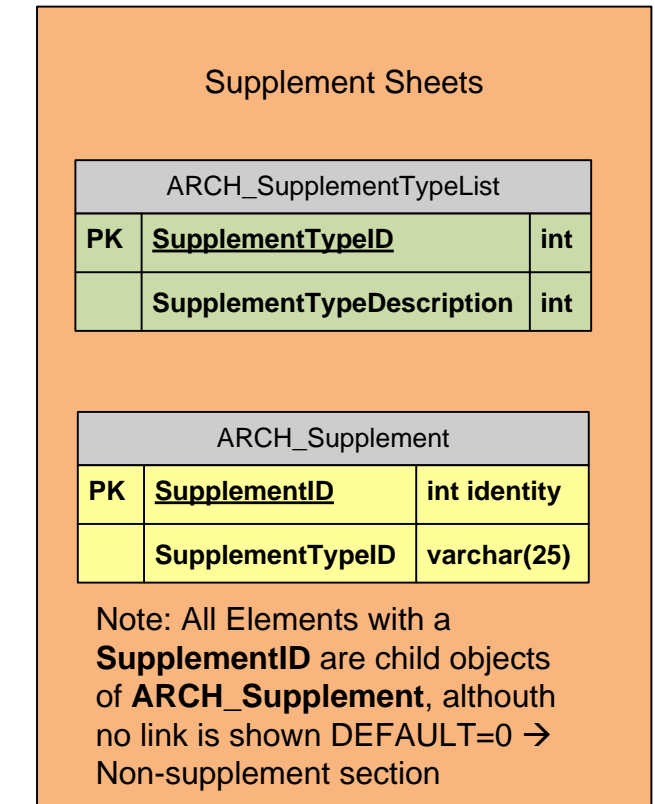
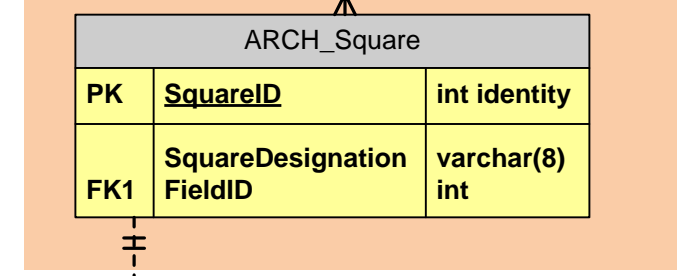
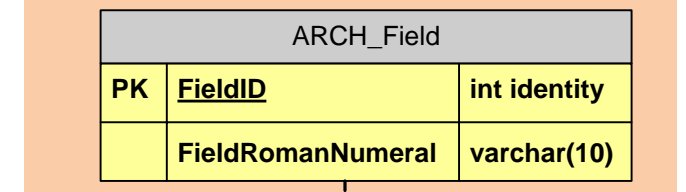


5. LEVELS
Levels are now kept in the **LocusPoints** entity as the shape file.

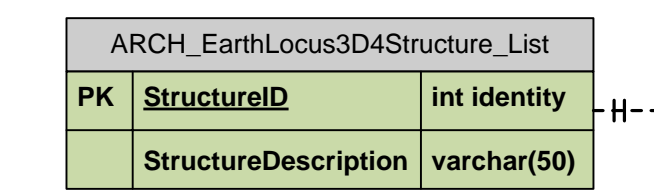
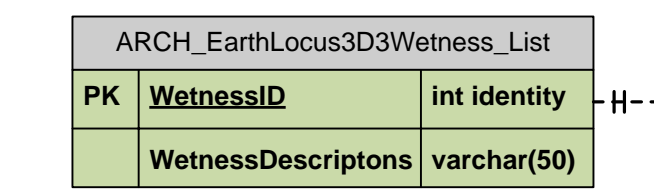
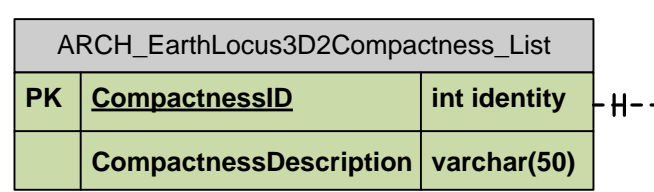
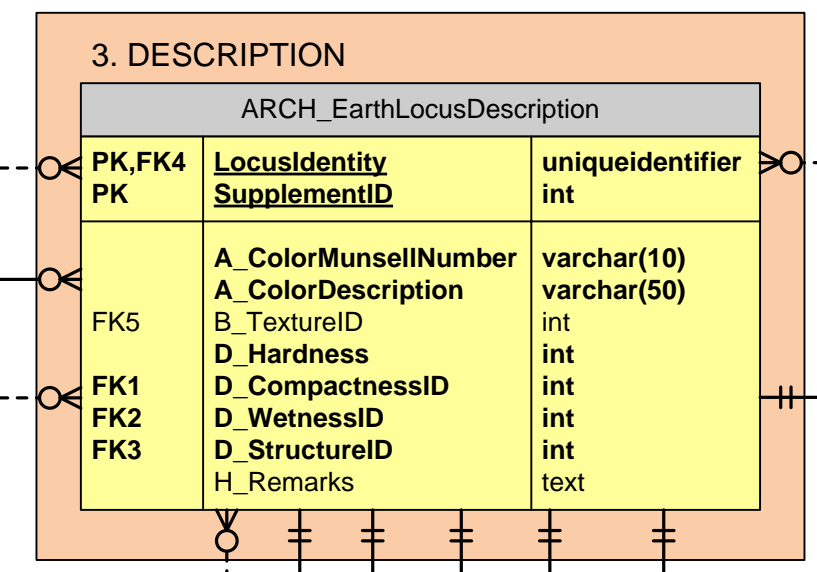
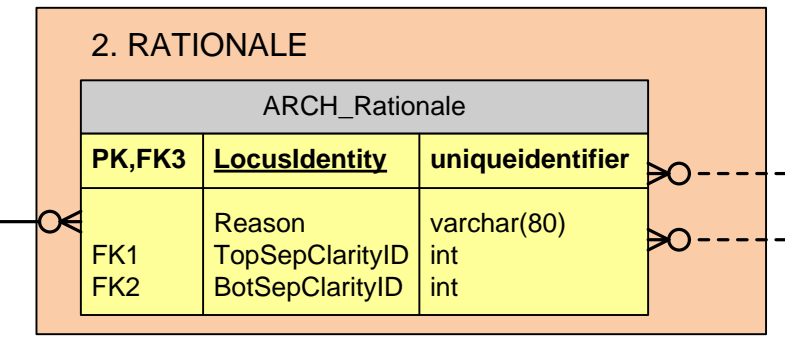
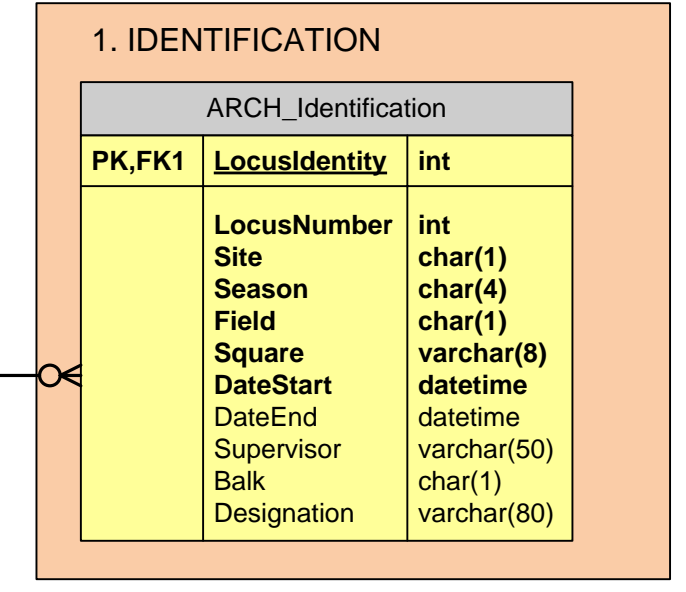
6. NOT COLLECTED



ARCH_Field and ARCH_Square are good candidates for expansion later. However, for now we don't need to add properties to these entities.



Note: Used with any element that requires a drawing



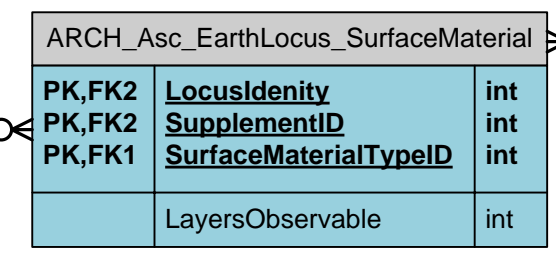
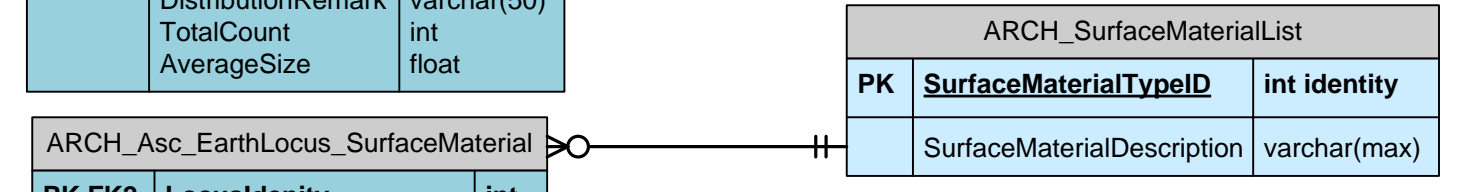
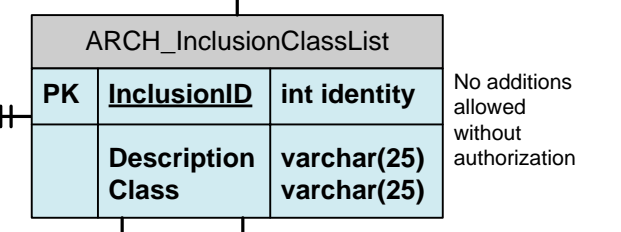
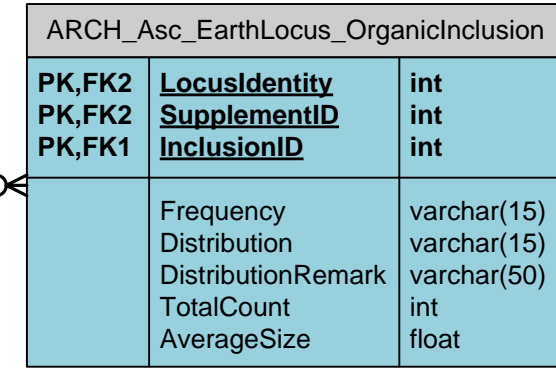
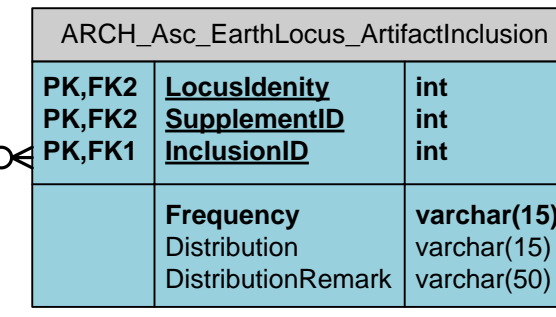
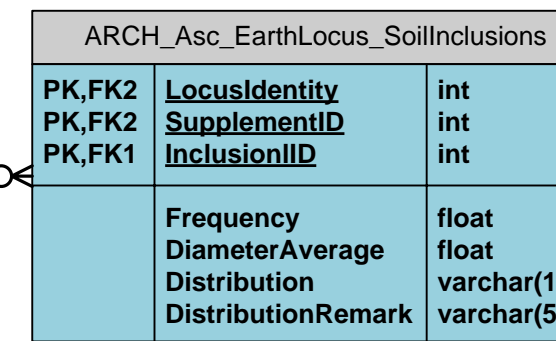
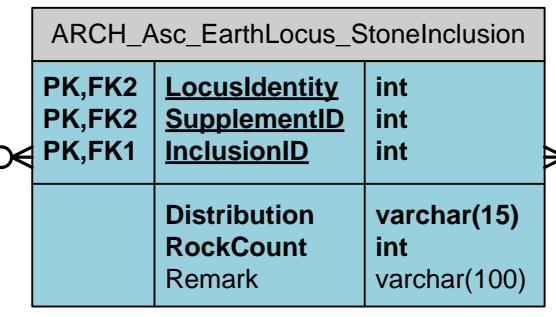
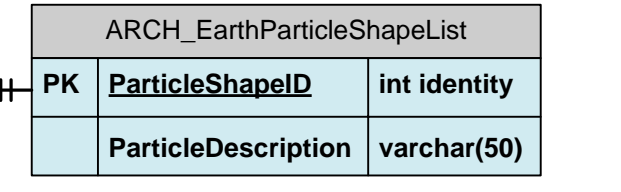
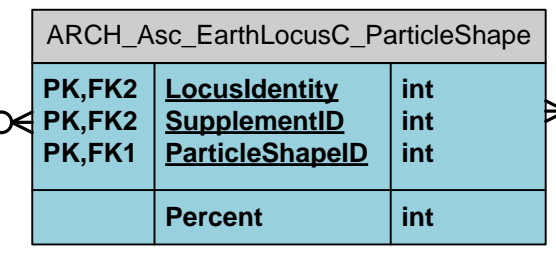
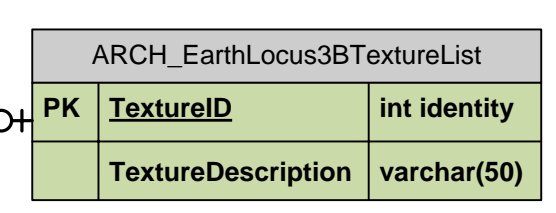
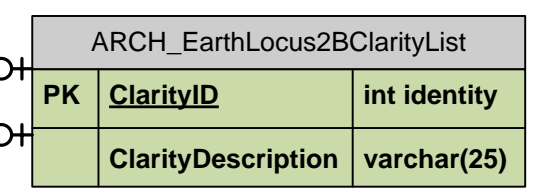
Color Indicates Major Form Part from MPP

Entity: Primitive, denotes single item found in another entity. Can be a list entity or child entity.

Entity: Primitive, denotes multiple items associated with other entity

Association: Includes data about the association. Indicates multi-dependency

Spatial Object: info to link it to another entity. This is a child object because entities have many shapes



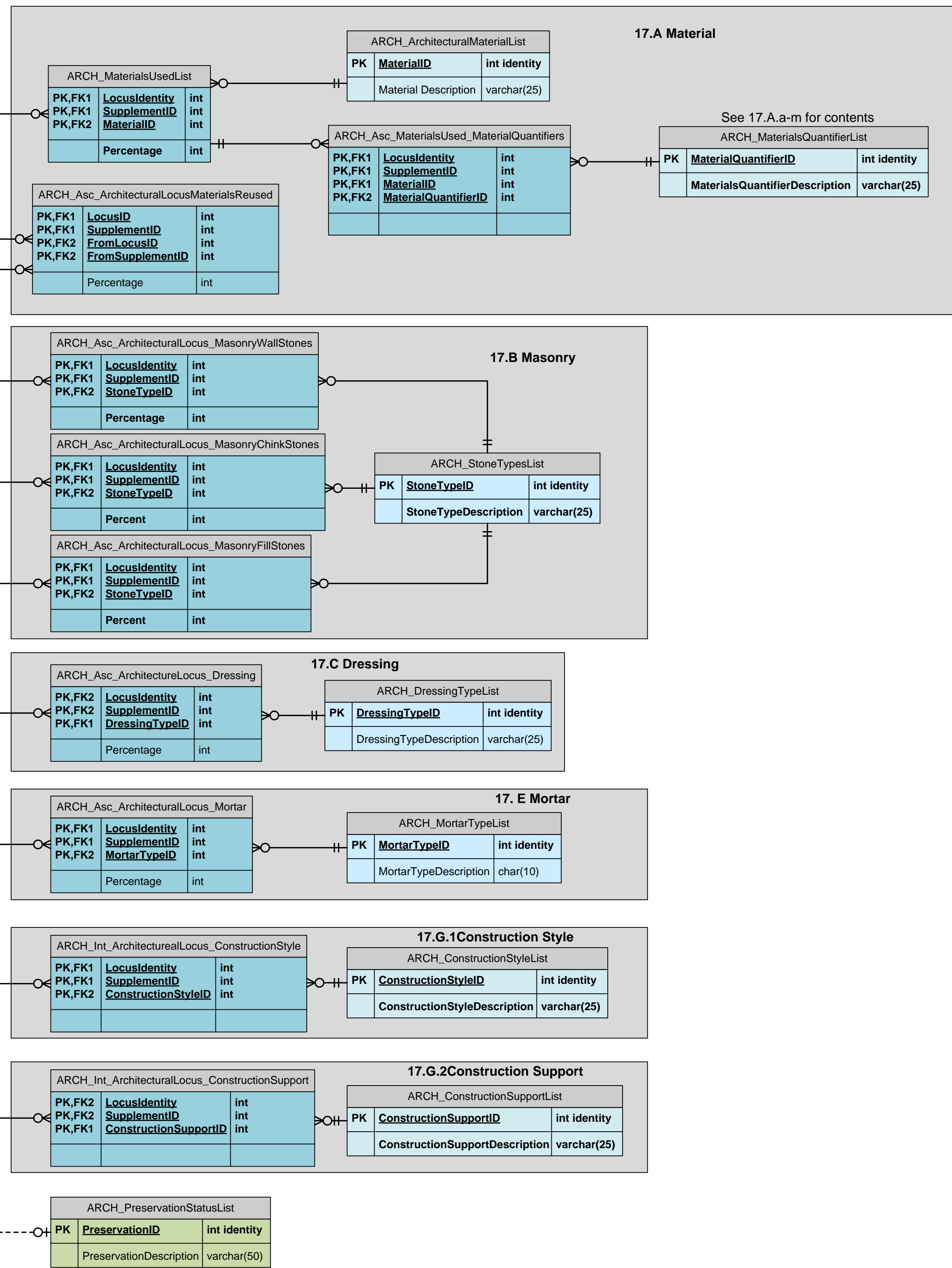
15. IDENTIFICATION
16. RATIONALE
(See Earth Locus Entities)

Locus is an entity of its own. And works for all types of loci, see Earth Locus Diagram.

Sections 18-28 Are identical to the sections in the earth locus and use the same tables.

- Color Indicates Major Form Part from MPP
- Entity: Primitive, denotes single item found in another entity. Can be a list entity or child entity.
 - Entity: Primitive, denotes multiple items associated with other entity
 - Association: Includes data about the association. Indicates multi-dependency
 - Spatial Object: info to link it to another entity. This is a child object because entities have many shapes

15. DESCRIPTION		
ARCH_ArchitecturalLocusDescription		
PK	<u>LocusIdentity</u>	int
PK	<u>SupplementID</u>	int
	A_ArchiteturafFragmentCount	int
	A_ArchiteturafFragmentDescription	varchar(80)
	A_ArchiteturafMaterialRemarks	varchar(80)
	B_BrickMinLength	int
	B_BrickMaxLenth	int
	B_BrickMinWidth	int
	B_BrickMaxWidth	int
	B_BrickMinThickness	int
	B_BrickMaxThickness	int
	D_ToolingWidthMin	int
	D_ToolingWidthMax	int
	D_ToolingLengthMin	int
	D_ToolingLengthMax	int
	E_AverageMorterThickness	int
	F_Unfaced	bit
	F_Plaster	bit
	F_Paint	bit
	F_Paint_Description	varchar(512)
	F_Facing_Color	varchar(10)
	G_Construction_Tendencies	varchar(400)
	H_CoursesMinNumber	int
	H_CoursesMaxNumber	int
	H_CoursesRandom	bit
	I_RowsMinNumber	int
	I_RowsMaxNumber	int
	I_TwoWithRubble	bit
	I_Description	varchar(100)
	I_Random	bit
	J_MeasurementsMaxLength	int
	J_MeasurementsMinWidth	int
	J_MeasurementsMaxWidth	int
	J_MeasurementsMinHeight	int
	J_MeasurementsMaxHeight	int
	J_MeasurementsOrientation	int
	J_MeasurementsDip	int
	K_PreservationType	int
	K_PreservationLeanDirection	int
	K_PreservationLeanDegrees	int
	K_PreservationTopOfFoundationElev	int
	L_Remarks	text



29. IDENTIFICATION
30. RATIONALE
(See Earth Locus Entities)

ARCH_InstallationLocusType			
PK	LocusIdentity	int	
FK1	InstallationTypeID	int	
FK2	CertaintyQualifierID	int	

31. Type			
ARCH_InstallationTypeList			
PK	InstallationTypeID	int	identity
	InstallationTypeDescription	varchar(25)	
ARCH_CertaintyQualifierList			
PK	CertaintyQualifierID	int	identity
	CertaintyQualifierDescription	varchar(25)	

ARCH_InstallationLocusDescription			
PK	LocusIdentity	int	
PK	SupplementID	int	
FK1	PlanID	int	
	PlanRemarks	varchar(255)	
	D_LengthLongest	float	
	D_WidthMin	float	
	D_WidthMax	float	
	D_HeightMin	float	
	D_HeightMax	float	
	Orientation	int	
	DescriptionRemarks	text	

32. Description			
32.A Material Use Architectural locus Materials table 17.A			
ARCH_PlanList			
PK	PlanID	int	identity
	PlanDescription	varchar(25)	
ARCH_Int_InstallationLocusPlan_Qualifier			
PK,FK2	LocusIdentity	int	int
PK,FK2	SupplementID	int	int
PK,FK1	PlanQualifierID	int	int
ARCH_PlanQualifierList			
PK	PlanQualifierID	int	identity
	PlanQualifierDescription	varchar(25)	
ARCH_Int_InstallationLocus_Lining			
PK,FK2	LocusIdentity	int	int
PK,FK2	SupplementID	int	int
PK,FK1	LiningID	int	int
ARCH_LiningList			
PK	LiningID	int	identity
	LiningDescription	varchar(25)	

Sections 33-43 Are identical to the sections in the earth locus and use the same tables.

