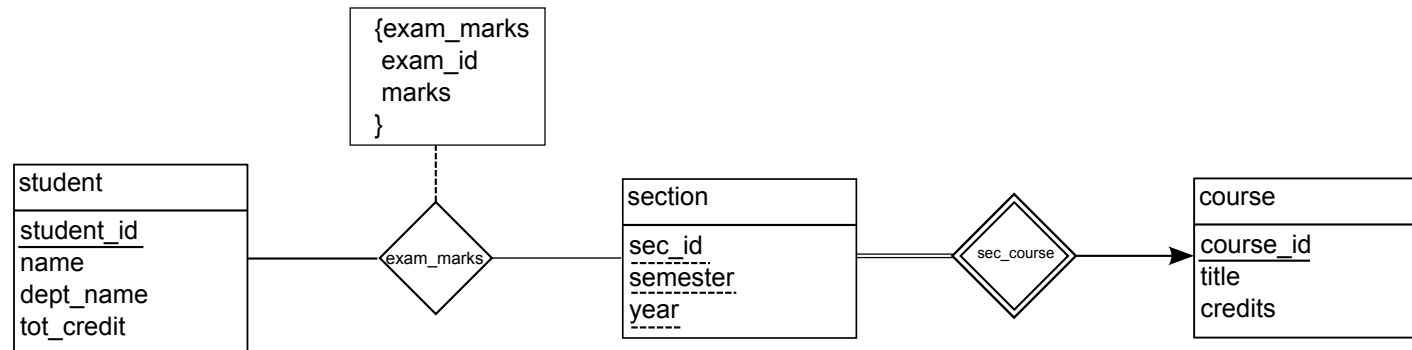


Here the relationship encapsulates the full connection between students, exams and section. However, this is not the way we would normally posit the relationship. Mostly we think of a student related to a section and as a consequence of that relationship, exams, assignments, projects etc. are created.



This is closer to the way we think, but it results in a rather unusual table layout. This may be primarily because we are not thinking of artifacts being associated with a relationship between a student and a section. I would challenge you to think of a better way of modeling this. Perhaps the first one, but with **takes** replacing **exam_marks** as an entity. And adding a many-to-many relationship between takes and artifacts. (What is an artifact? Its an assignment with an unspecified category.)